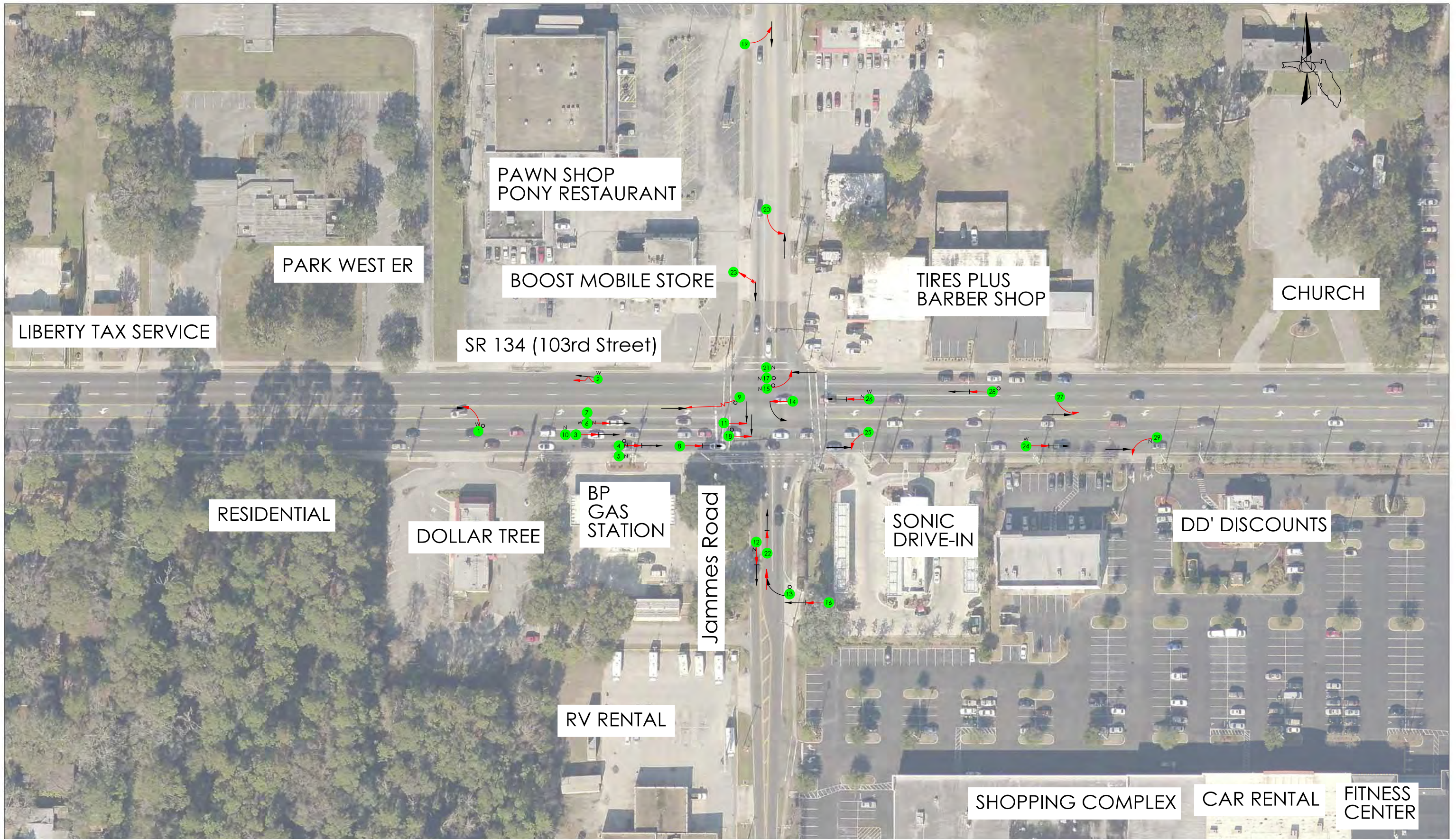


<b>LEGEND:</b> BACKING VEHICLE SIDESWIPE OUT OF CONTROL PEDESTRIAN /BIKE COLLISION REAR-END COLLISION HEAD-ON COLLISION OVERTURNED VEHICLE PARKED VEHICLE PERSONAL INJURY FATALITY CRASH DETAILS UNKNOWN LEFT TURN COLLISION RIGHT TURN COLLISION COMMERCIAL TRUCK DARK LIGHTING CONDITION WET CONDITIONS FIXED/MOVEABLE OBJECT OCCUPANT FELL FROM VEHICLE	<b>STATE OF FLORIDA</b> <b>DEPARTMENT OF TRANSPORTATION</b>			<b>COLLISION DIAGRAM</b> <b>SR 134 AND JAMMES ROAD</b>		PAGE 1
	AECOM 7800 CONGRESS AVENUE, SUITE 200 BOCA RATON, FL 33487 TEL: (561) 994-6500	ROAD NO. SR-134	COUNTY DUVAL COUNTY	FINANCIAL PROJECT ID 211079-8-32-01	2012	





LEGEND:	
	BACKING VEHICLE
	SIDESWIPE
	OUT OF CONTROL
	PEDESTRIAN /BIKE COLLISION
	REAR-END COLLISION
	HEAD-ON COLLISION
	OVERTURNED VEHICLE
	PARKED VEHICLE
	PERSONAL INJURY
	FATALITY
	CRASH DETAILS UNKNOWN
	LEFT TURN COLLISION
	RIGHT TURN COLLISION
	COMMERCIAL TRUCK
N	DARK LIGHTING CONDITION
W	WET CONDITIONS
□	FIXED/MOVEABLE OBJECT
X	OCCUPANT FELL FROM VEHICLE

AECOM  
 7800 CONGRESS AVENUE, SUITE 200  
 BOCA RATON, FL 33487  
 TEL: (561) 994-6500

STATE OF FLORIDA DEPARTMENT OF TRANSPORTATION		
ROAD NO.	COUNTY	FINANCIAL PROJECT ID
SR-134	DUVAL COUNTY	211079-8-32-01

COLLISION DIAGRAM  
 SR 134 AND JAMMES ROAD  
 YEAR 2013





<b>LEGEND:</b> BACKING VEHICLE SIDESWIPE OUT OF CONTROL PEDESTRIAN /BIKE COLLISION REAR-END COLLISION HEAD-ON COLLISION OVERTURNED VEHICLE PARKED VEHICLE PERSONAL INJURY FATALITY CRASH DETAILS UNKNOWN LEFT TURN COLLISION RIGHT TURN COLLISION COMMERCIAL TRUCK DARK LIGHTING CONDITION WET CONDITIONS FIXED/MOVEABLE OBJECT OCCUPANT FELL FROM VEHICLE	<b>STATE OF FLORIDA</b> <b>DEPARTMENT OF TRANSPORTATION</b>		<b>COLLISION DIAGRAM</b> SR 134 AND JAMMES ROAD		PAGE 1
	AECOM 7800 CONGRESS AVENUE, SUITE 200 BOCA RATON, FL 33487 TEL: (561) 994-6500	ROAD NO. SR-134	COUNTY DUVAL COUNTY	FINANCIAL PROJECT ID 211079-8-32-01	2014